

SERVICE MANUAL

M-1436

Home stereo music system

SPECIFICATIONS

● TUNER SECTION

Frequency range: FM: 87.5 – 108 MHz
MW: 515 – 1620 kHz
LW: 150 – 300 kHz

Usable sensitivity: FM: 5 μ V (IHF)
MW: 300 μ V/m (IHF)
LW: 600 μ V/m (IHF)

FM signal to noise ratio: 62 dB
FM THD (mono/stereo): 0.5/1%
FM frequency response: 50 – 10,000 Hz
FM separation: 36 dB (1 kHz)

Antenna: FM: 300 ohm balanced terminal
AM: Built-in ferrite-core antenna and external ANT socket

● AUDIO SECTION

Power output: 25 + 25 watts (RMS) 8 ohms load.
76 watts total MUSIC power (IHF)

Frequency response: 40 – 15,000 Hz (–3 dB)
THD: Less than 0.2% at 500mW (1 kHz)
Less than 1.0% at rated output power

Input sens. and impedance: PHONO: 2.5mV (50k ohms)
AUX: 180mV (50k ohms)
MIC: 2mV (600 ohms)

Load impedance: SPEAKERS: 8 ohms
HEADPHONES: 8 ohms

Output and load impedance: TAPE-OUT: 300mV/100k ohms

Tone control action: BASS: 100 Hz \pm 10 dB
TREBLE: 10 kHz \pm 10 dB

Loudness control effect: 100 Hz + 6 dB
10 kHz + 6 dB

● CASSETTE SECTION

Track system: 4-track 2-channel, stereo recording and playback

Tape speed: 4.75 cm/sec. (1-7/8 i.p.s.)

Wow and flutter: 0.15% (WRMS)

Signal to noise ratio: 59 dB (Dolby NR on, CrO₂ tape)
51 dB (Dolby NR off, CrO₂ tape)

Frequency response (Dolby NR off): Normal tape: 63 – 12,500 Hz (\pm 3 dB),
(40 – 13,000 Hz)
CrO₂ tape: 63 – 12,500 Hz (\pm 3 dB),
(40 – 14,000 Hz)
FeCr tape: 63 – 12,500 Hz (\pm 3 dB),
(40 – 14,000 Hz)
(Dolby NR on: \pm 5 dB)

Rec. system and bias freq.: AC bias, 60 kHz

Erasing system: AC erase

● RECORD PLAYER SECTION

System: 2 speed belt drive

Motor: DC motor

Speeds: 33-1/3, 45 r.p.m.

Wow and flutter: 0.15% (WRMS)

Signal to noise ratio: 45 dB

Cartridge: Magnetic

Stylus pressure: 2 gr.

● DIMENSION

Center unit (mm): 607(W) x 220(H) x 420(D)

● WEIGHT

Center unit: 13.7kg. (30-1/5 lbs.)

- Dolby NR under license from Dolby Laboratories.
- The word "DOLBY" and the Double-D-Symbol are trademarks of Dolby Laboratories.

* SPECIFICATIONS AND DESIGN ARE SUBJECT TO CHANGE WITHOUT NOTICE.

ALIGNMENT PROCEDURE (TUNER)

<ol style="list-style-type: none"> Signal input must be kept as low as possible to avoid AGC and limiting action. Standard modulation is 400Hz at 30% amplitude. Set volume control at maximum unless otherwise indicated, when using V.T.V.M. for output indicator. Set function selector to "RADIO" position. 						
Step	Signal Generator or Sweep Generator		Radio Dial Setting	Output Indicator Connection	Adjust	Adjust for
	Connection	Frequency				
AM-IF-ALIGNMENT						
1.	Push MW button					
2.	To standard loop-ANT placed at a distance of 60cm from the built-in bar-ANT.	470 KHz	Point of non-interference	Scope or V.M. To TP101 (GND to R122) or SPoutput	T103 (1st IFT) T104 (2nd IFT)	Maximum output
MW-RF ALIGNMENT						
3.	SAME AS STEP (2)	540 KHz	540 KHz	SAME AS STEP (2)	L5 (MW OSC coil)	Maximum output
4.	SAME AS STEP (2)	1600 KHz	1600 KHz	SAME AS STEP (2)	TC6 (MW OSC trimmer)	Maximum output
5.	Repeat steps (3) and (4).					
6.	SAME AS STEP (2)	600 KHz	600 KHz	SAME AS STEP (2)	L901 (MW ANT coil)	Maximum output
7.	SAME AS STEP (2)	1400 KHz	1400 KHz	SAME AS STEP (2)	TC4 (MW ANT trimmer)	Maximum output
8.	Repeat steps (6) and (7).					
LW-RF ALIGNMENT						
9.	Push LW button.					
10.	SAME AS STEP (2)	150 KHz	150 KHz	SAME AS STEP (2)	L6 (LW OSC coil)	Maximum output
11.	SAME AS STEP (2)	300 KHz	300 KHz	SAME AS STEP (2)	TC7 (LW OSC trimmer)	Maximum output
12.	Repeat steps (10) and (11).					
13.	SAME AS STEP (2)	160 KHz	160 KHz	SAME AS STEP (2)	L902 (LW ANT coil)	Maximum output
14.	SAME AS STEP (2)	280 KHz	280 KHz	SAME AS STEP (2)	TC5 (LW ANT trimmer)	Maximum output
15.	Repeat steps (13) and (14).					
FM-IF ALIGNMENT						
16.	Push FM button.					
17.	SWEEP GENERATOR Hot side clip Transistor (Q2) as shown in Fig. A GND to Chassis (Q 2 2SC1047)	10.7 MHz	Point of non-interference	Vertical amplifier of scope. To TP102 (GND to R122)	T102 (FM Det. Coil)	Turn fully counter clockwise
					T1 (1st IFT) T101 (FM Det. Coil)	Flat and maximum as shown in Fig. B.
					T102 (FM Det. Coil)	"S" curve as shown in Fig. C.

ALIGNMENT PROCEDURE (TUNER)

Step	Signal Generator or Sweep Generator		Radio Dial Setting	Output indicator Connection	Adjust	Adjust for
	Connection	Frequency				
FM-RF ALIGNMENT						
18.	To FMANT terminal Through dummy	88 MHz	88 MHz	Scope or V.M. To TP102 (GND to R122) or SPoutput	L4 (FM OSC coil)	Maximum output
19.	SAME AS STEP (18)	108 MHz	108 MHz	SAME AS STEP (18)	TC3 (FM OSC trimmer)	Maximum output
20.	Repeat steps (18) and (19).					
21.	SAME AS STEP (18)	90 MHz	90 MHz	SAME AS STEP (18)	L1 (FM ANT coil) L2 (FM RF coil)	Maximum output
22.	SAME AS STEP (18)	106 MHz	106 MHz	SAME AS STEP (18)	TC1 (FM ANT trimmer) TC2 (FM RF trimmer)	Maximum output
23.	Repeat steps (21) and (22).					
FM MPX PILOT ALIGNMENT						
24.		No. signal	Point of non-interference	Frequency counter To TP151 (GND to R122) Short-circuit between R122 and TP102.	SVR-152	19 KHz±30 Hz
FM STEREO SEPARATION ALIGNMENT						
25.	SAME AS STEP (18)	98 MHz Input 1mV stereo mod. 1 KHz 30% L (and R)	98 MHz	Scope or V.M. To right ch. output (To Left ch. output)	SVR151	Minimum output

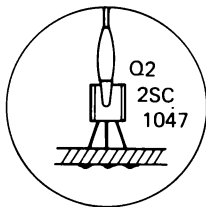


Fig. A

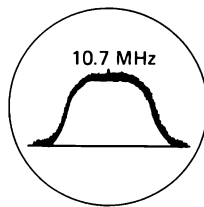


Fig. B

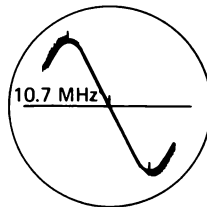
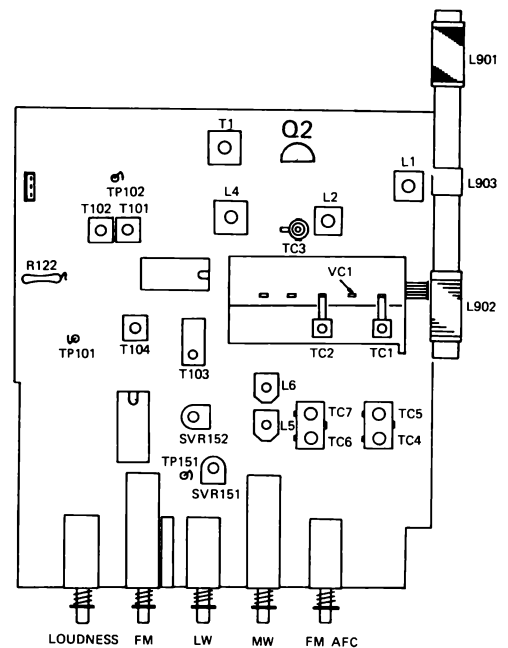


Fig. C

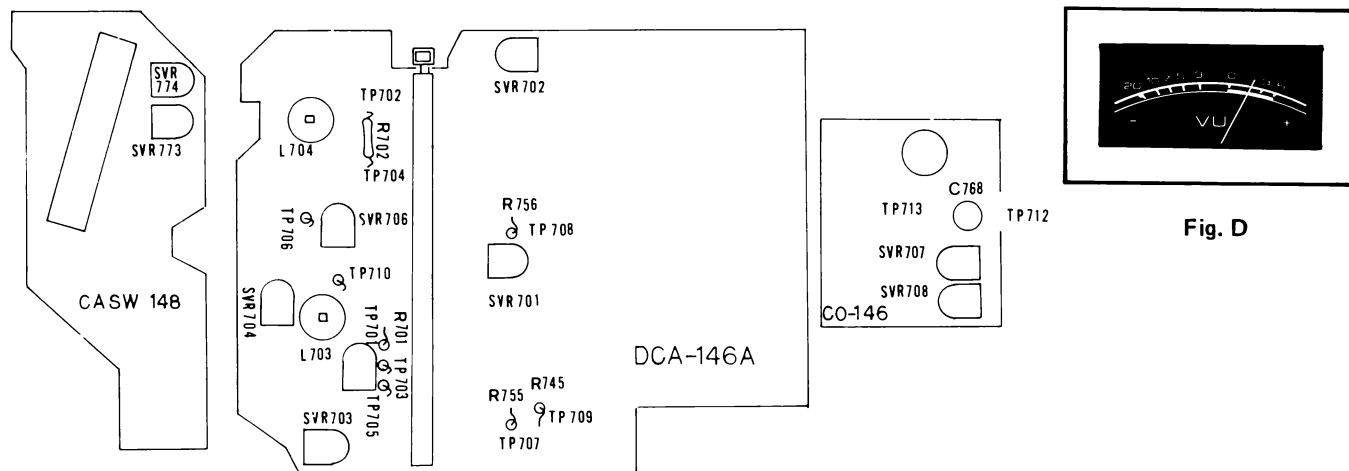
TUNER ALIGNMENT COMPONENT LAYOUT (COMPONENT SIDE)



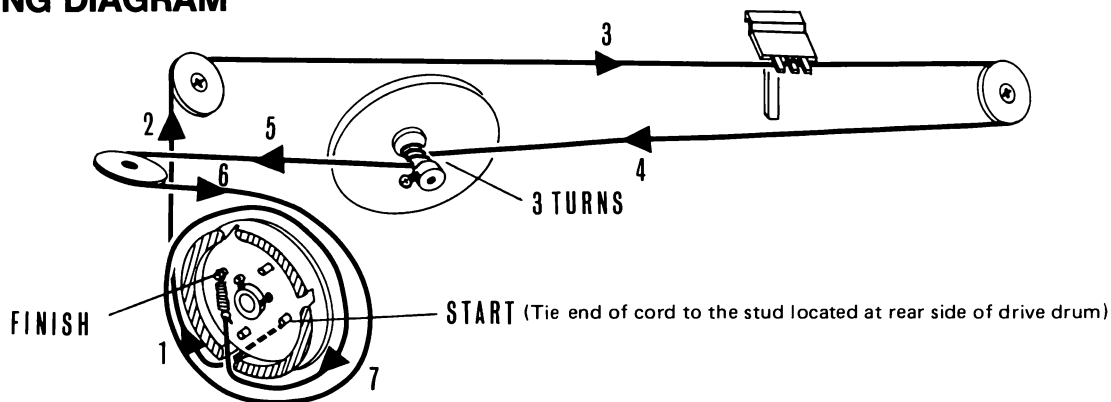
ALIGNMENT PROCEDURE (CASSETTE TAPE RECORDER)

Step	Output Indicator Connection	Adjust	Adjust for
PLAYBACK LEVEL ALIGNMENT			
1.	Set function selector to "TAPE" position, Dolby NR switch "OFF" and the tape selector switch to "NORMAL" position.		
2.	Insert Dolby B type tone 200 nwb/m Test Tape (e.g. TEAC brand MTT-150) in the cassette holder, then push play key.		
3.	Connect V.T.V.M. to Test Point TP705	SVR-701	100 mV
4.	Connect V.T.V.M. to Test Point TP706	SVR-702	100 mV
LEVEL METER ALIGNMENT			
5.	Follow above steps (1) and (2).		
6.	Left level meter	SVR-703	+2dB (See Fig. D)
7.	Right level meter	SVR-704	+2dB (See Fig. D)
RECORDING BIAS ALIGNMENT			
8.	Set blank tape in the holder, and then push play and record keys. (Tape select switch CrO ₂)		
9.	Connect V.T.V.M. across TP701 and TP703	SVR-707	5.5 mV
10.	Connect V.T.V.M. across TP702 and TP704	SVR-708	5.5 mV
11.	Follow above step (8), then shift tape selector switch to "NORMAL" position.	SVR-773	3.7 mV
12.	Shift tape selector switch to "FeCr" position.	SVR-774	4.2 mV

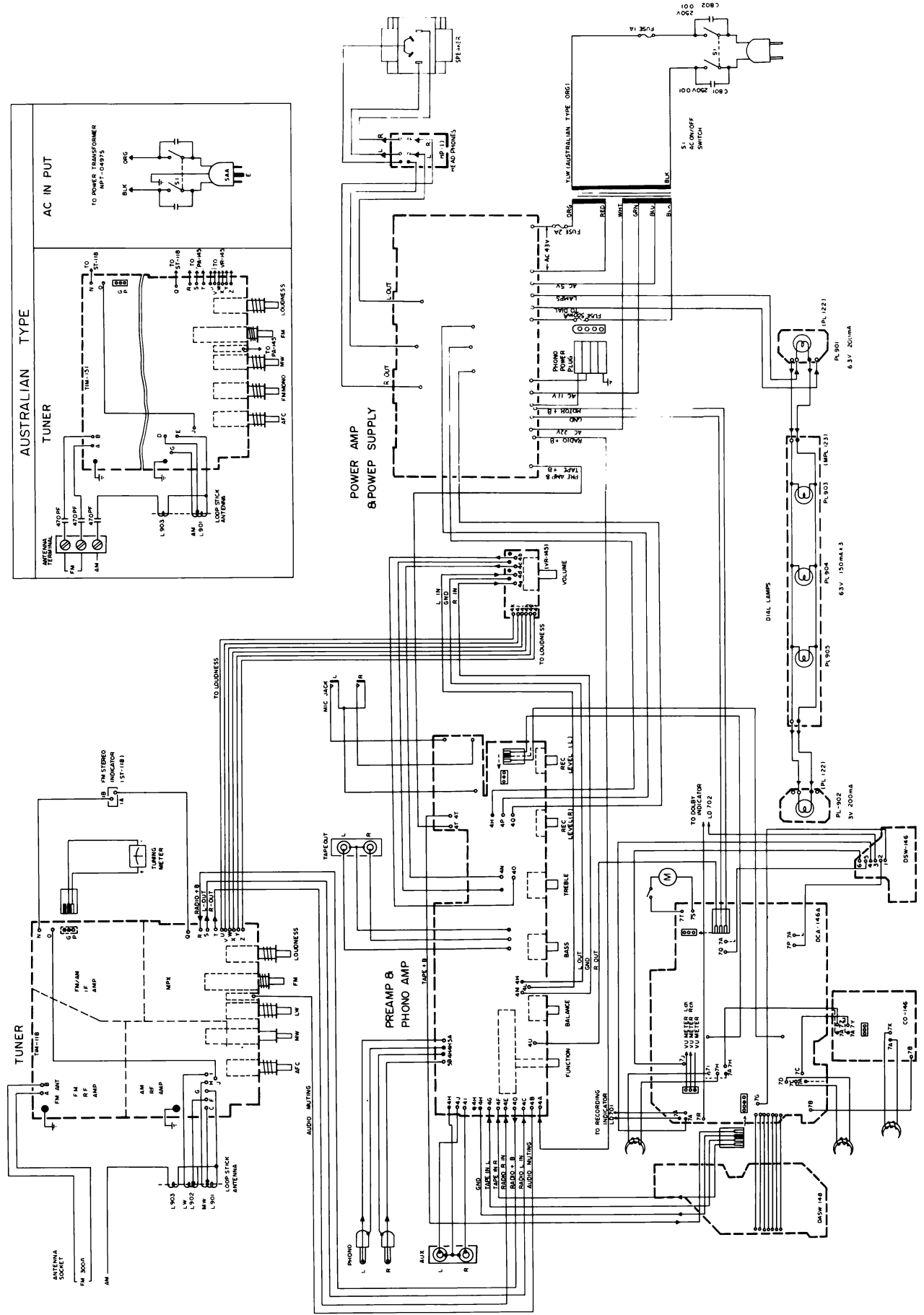
DCA-146 Top view for Cassette Alignment



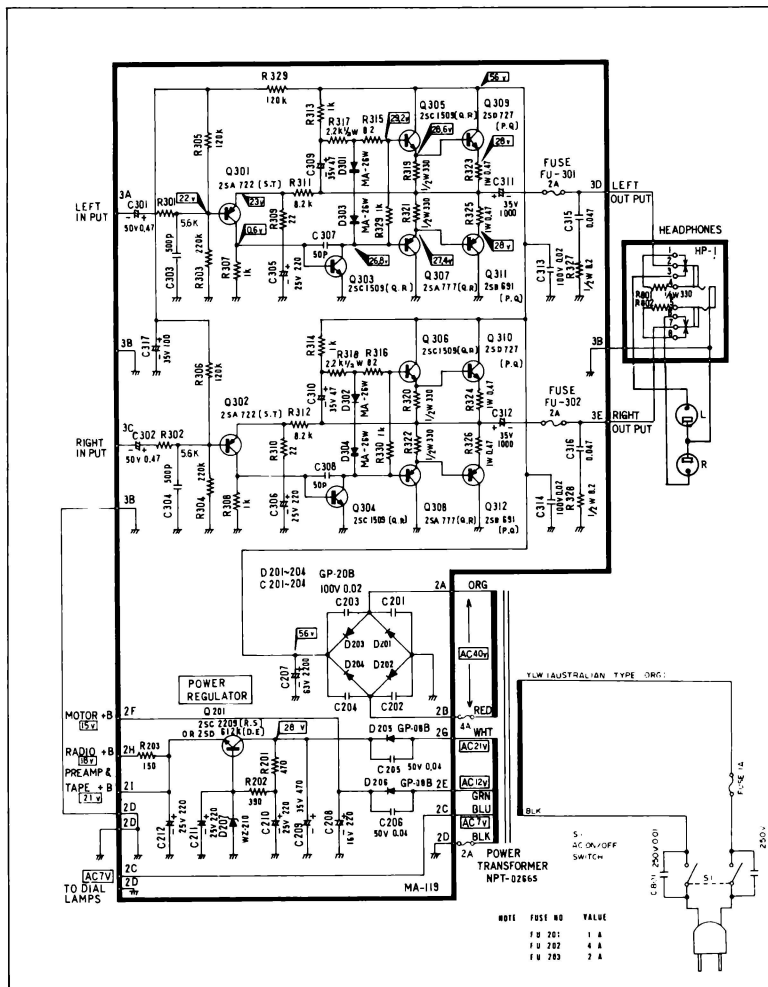
STRINGING DIAGRAM



WIRING DIAGRAM



POWER AMPLIFIER & POWER SUPPLY (MA-119B)



NOTE:

(1) DC VOLTAGE MEASUREMENT WERE TAKEN WITH A HIGH IMPEDANCE INPUT VOLT-METER FROM THE POINT INDICATED TO THE CHASSIS GROUND. VOLTAGES MAY VARY $\pm 20\%$.

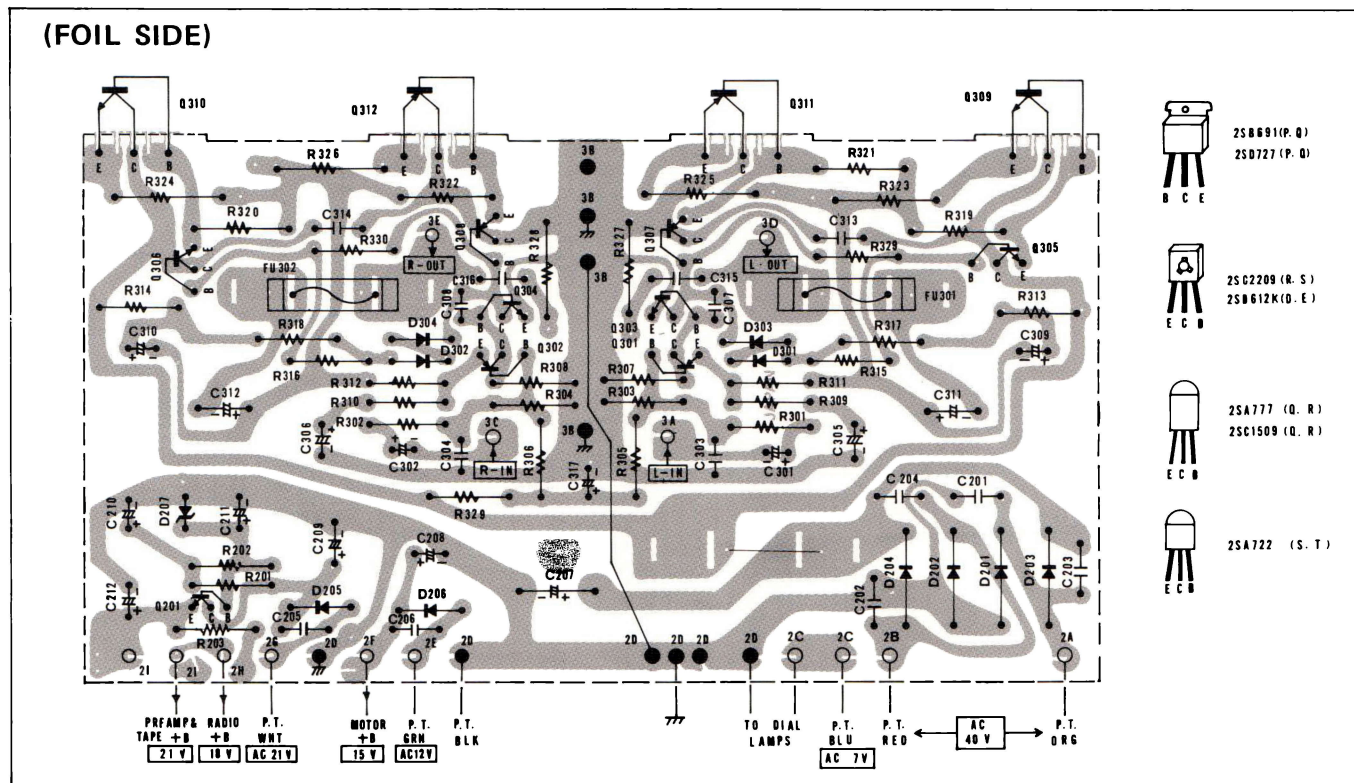
(2) THE SWITCHES ARE SHOWN IN THE FOLLOWING POSITION.

- S1 AC ON/OFF SW OFF
- S2 VOLTAGE SELECTOR 220V
- S3 FUNCTION SELECTOR RADIO
- S4 LOUDNESS SW. OFF
- S5 FM SW. ON
- S6 AUDIO MUTING SW. OFF
- S7 LW SW. OFF
- S8 MW SW. OFF
- S9 AFC SW. OFF
- S10 REC/PLAY SW. PLAY
- S11 TAPE SELECTOR NORMAL

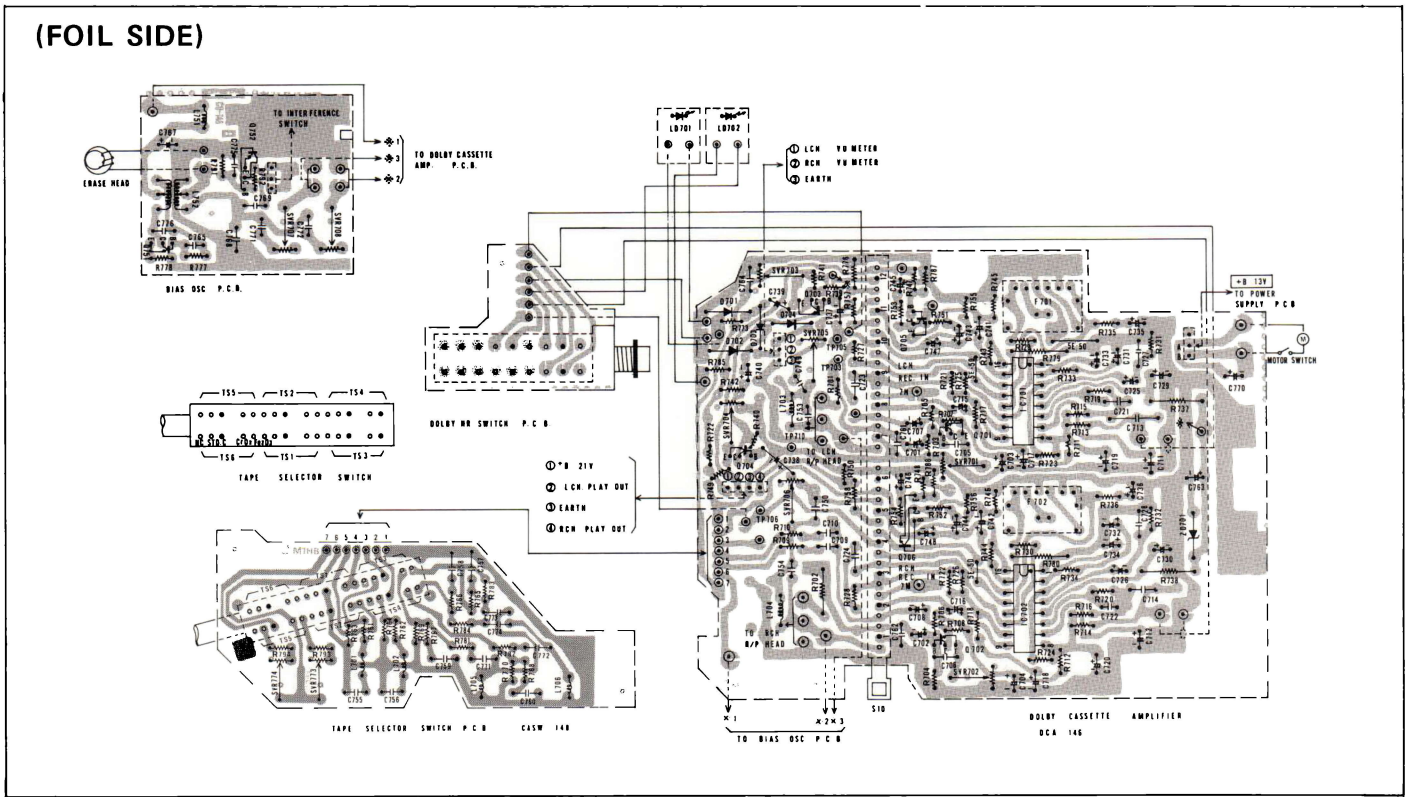
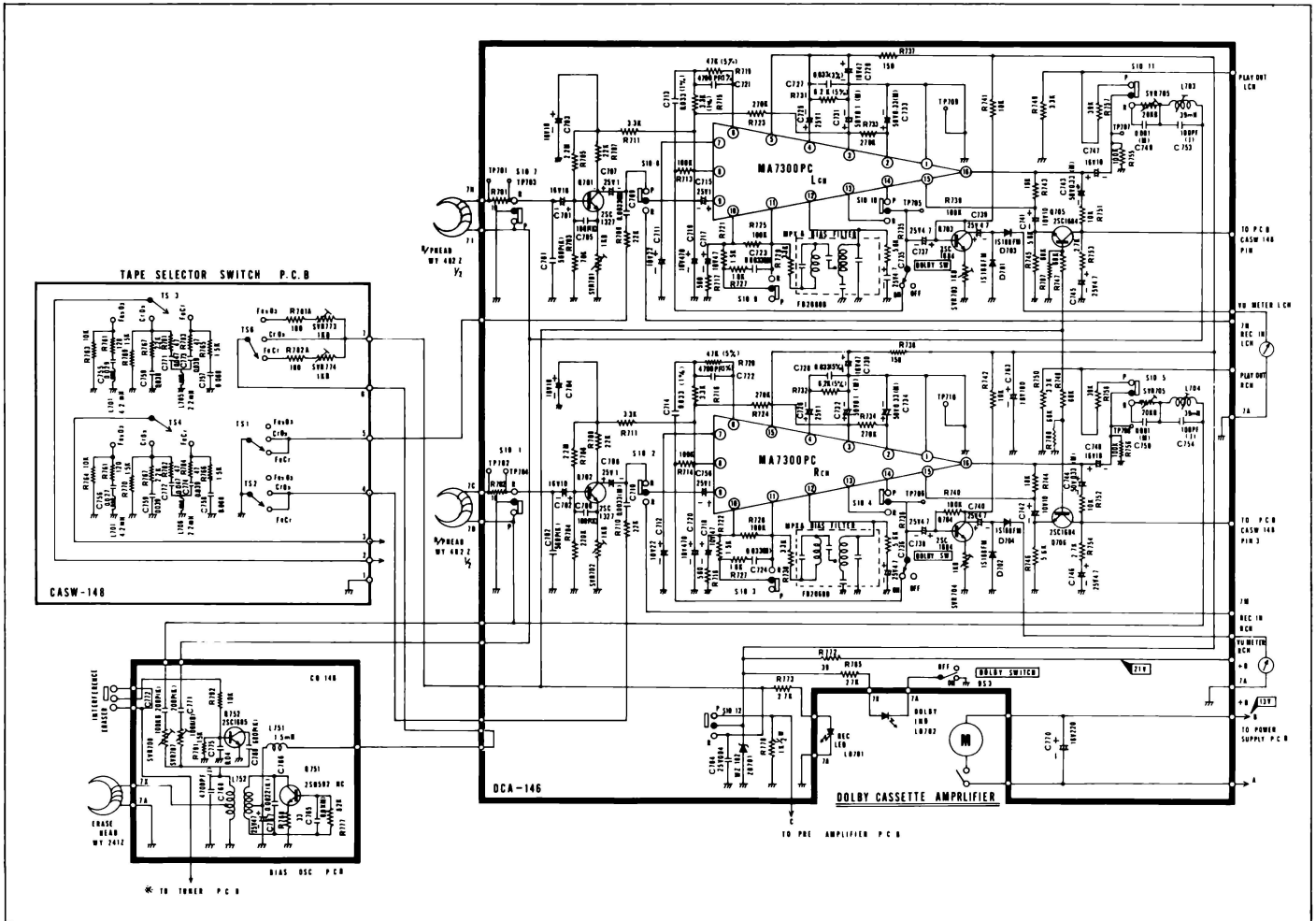
(3) UNLESS OTHERWISE SPECIFIED RESISTORS ARE 1/4 WATT, $\pm 10\%$ AND CAPACITORS IN μF .

(4) /// THIS SYMBOL INDICATES GROUND.

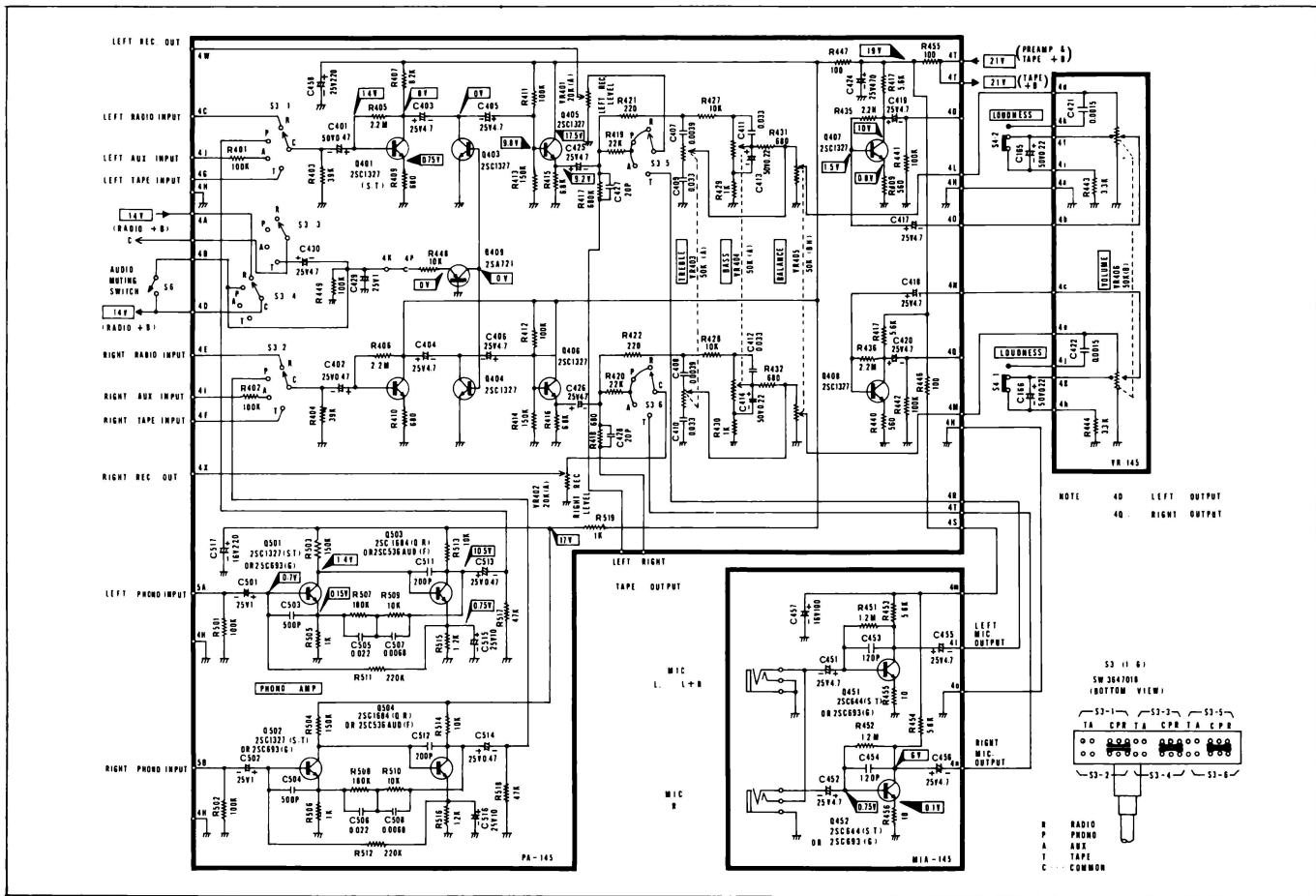
(FOIL SIDE)



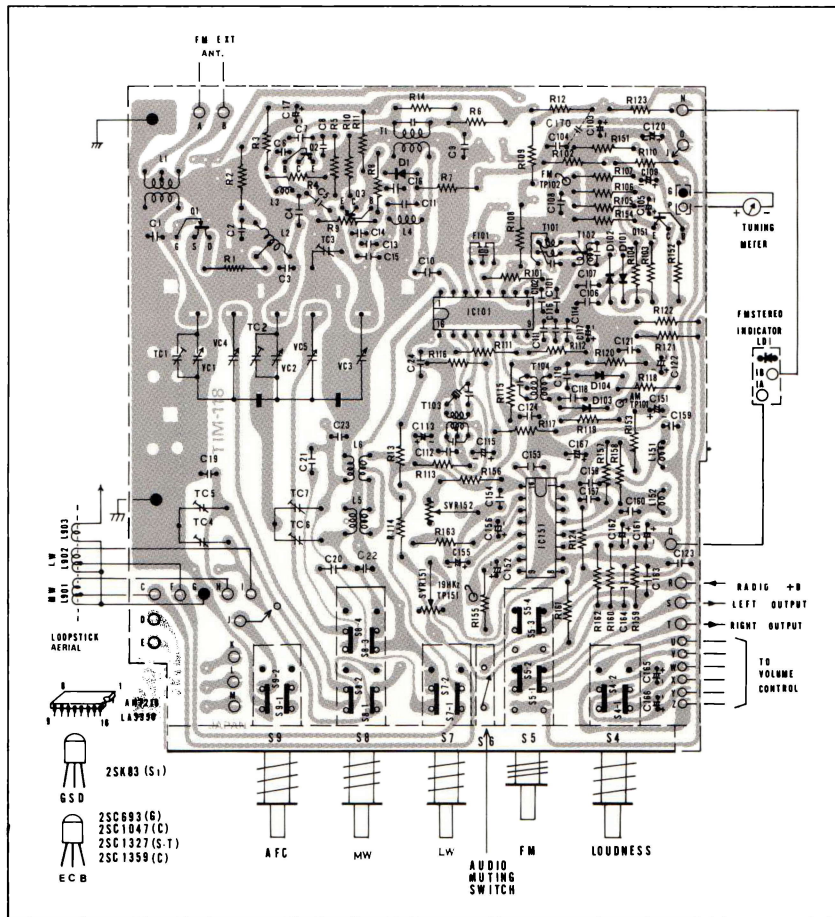
CASSETTE AMPLIFIER (DCA-146)



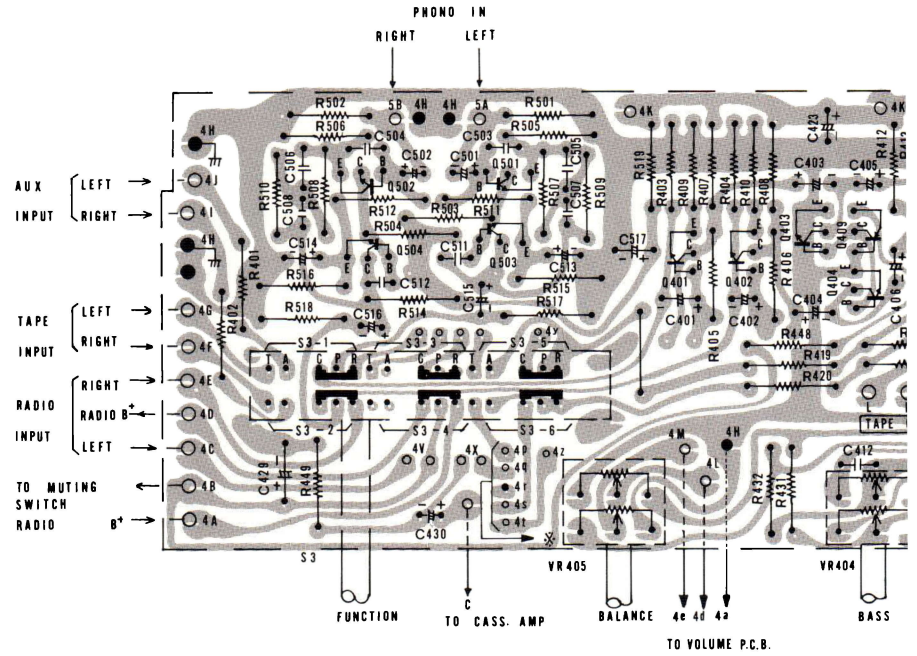
PREAMPLIFIER & PHONO AMPLIFIER (PA-145, MIA-145)



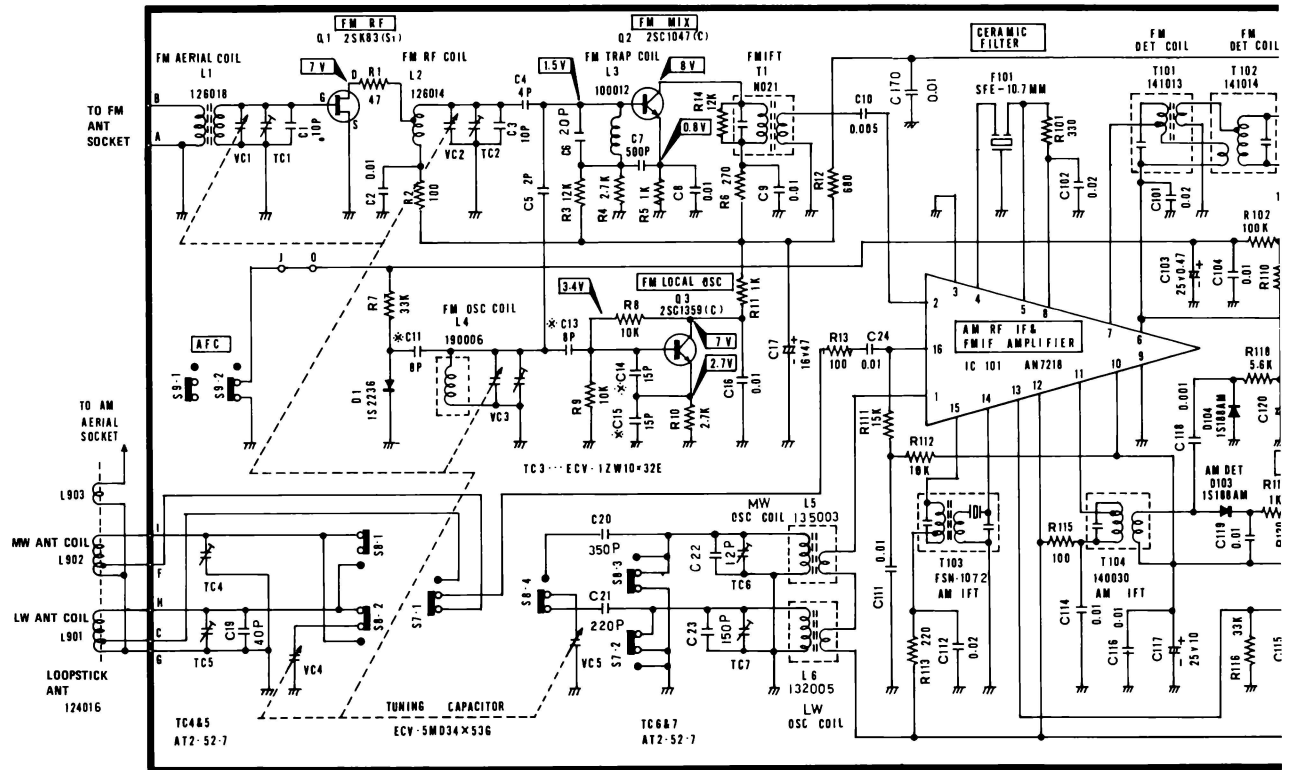
TUNER (TIM-118)



(FOIL SIDE)

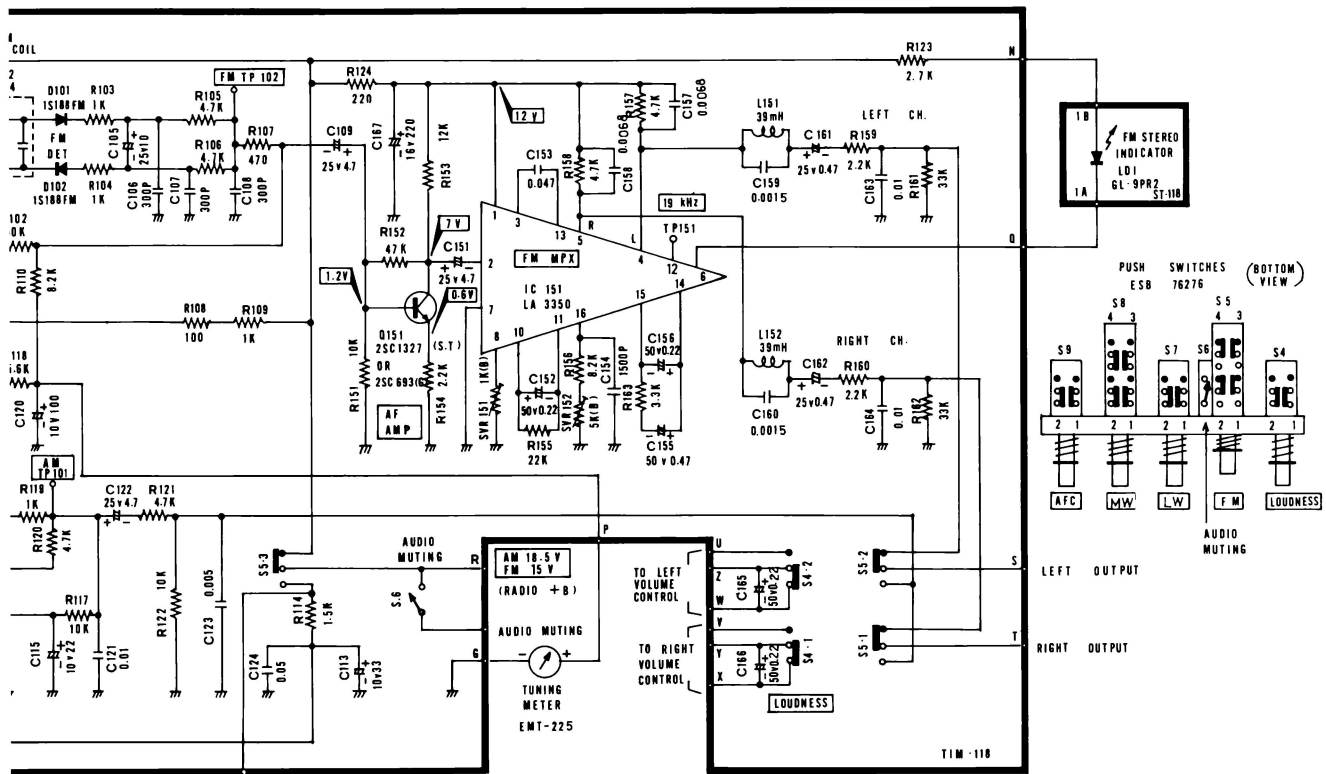
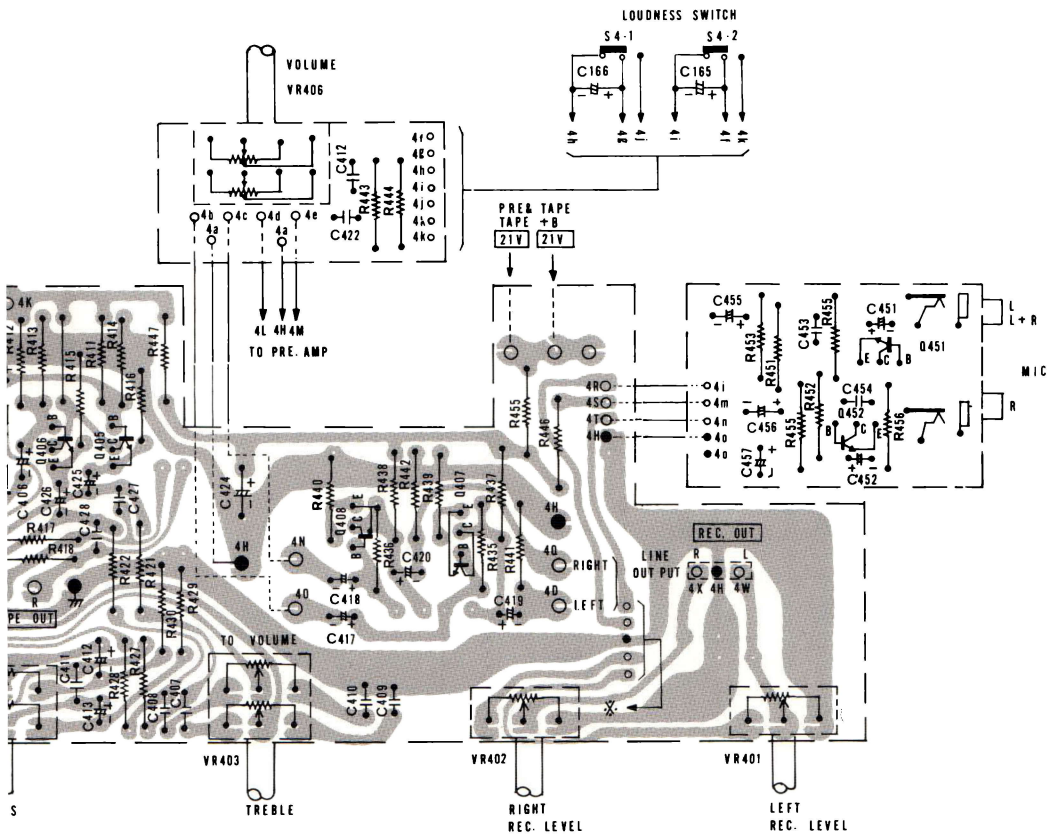


TUNER



IC101
AN1218

IC PIN NO.	1	2	3	4	5	6	7	8	9	10	11	12	13	14	15	16
VOLTAGE (V)	5.5	0.7	0	2.6	3.5	4.7	4.7	3.5	0	0	5.5	3.5	0.7	5.5	0.7	5.5



16 375

‡ TO DIAS OSC P.C.B.

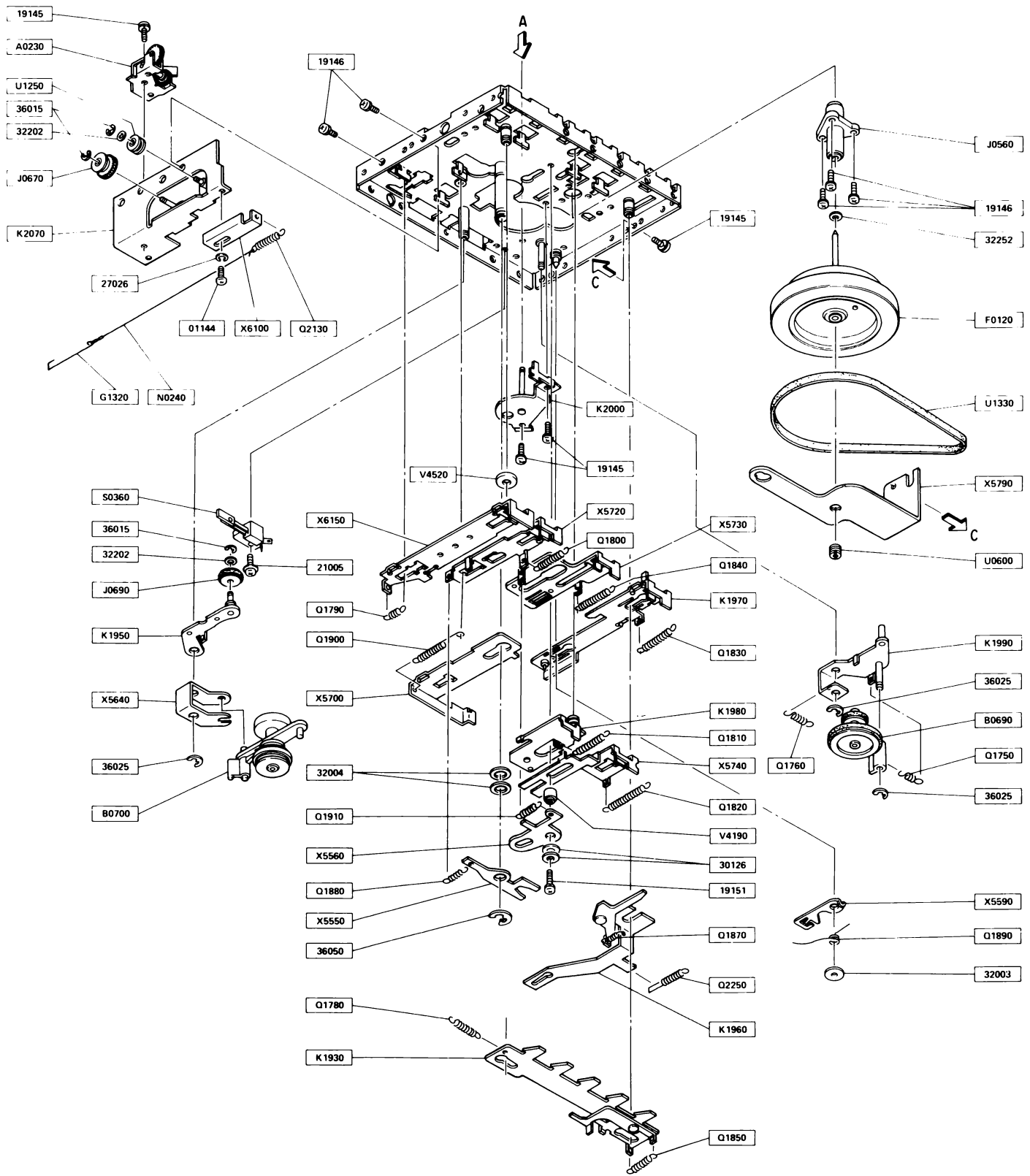
IC 151	IC PIN NO	1	2	3	4	5	6	7	8	9	10	11	12	13	14	15	16
LA 3350	VOLTAGE (V)	12	3.0	5.5	7.5	7.5	13.5	0	0.25	6	2.0	2.0	2.4	2.0	2.0	2.0	2.7

PARTS LIST

CASSETTE MECHANISM (CT-3709E)

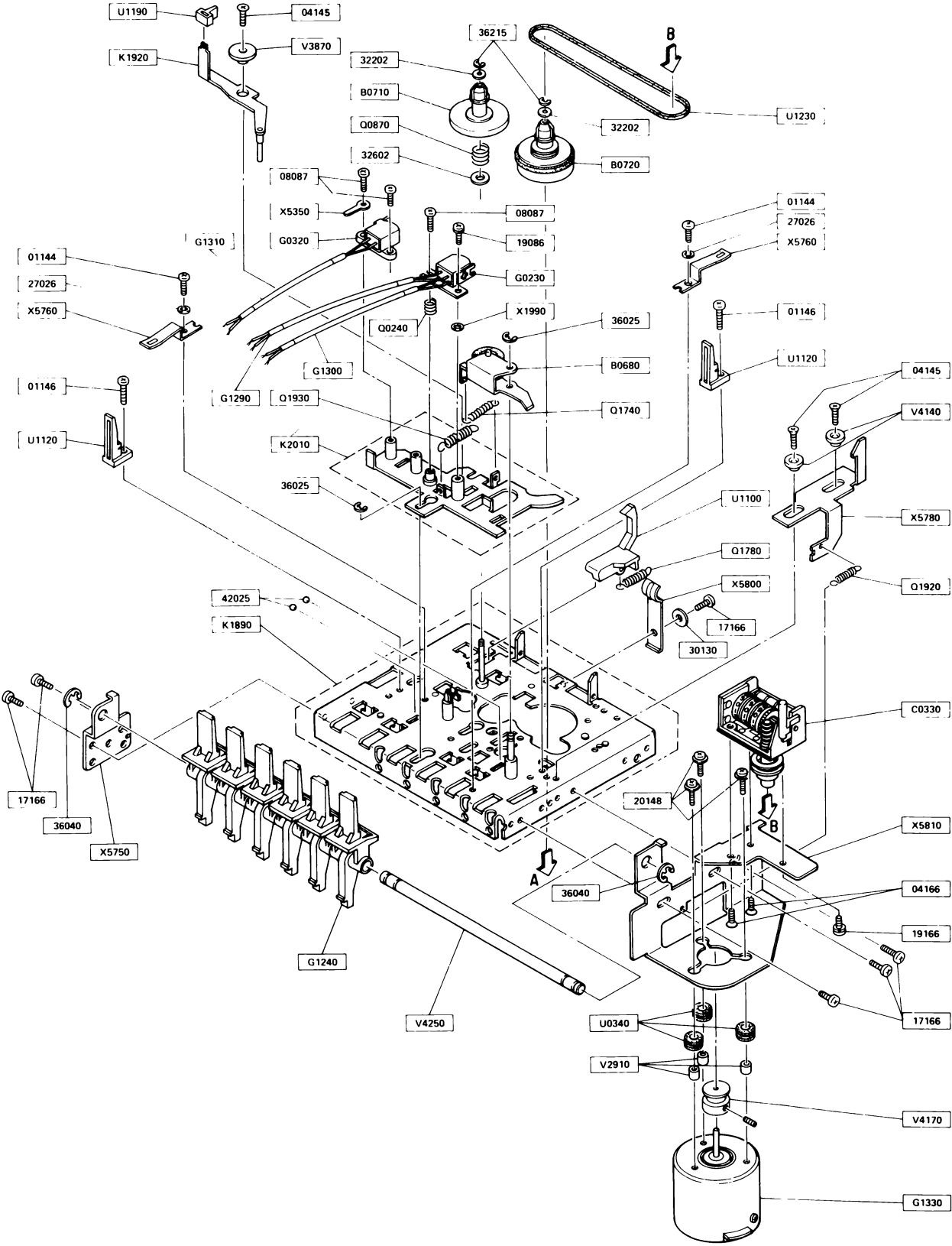
Part No.	Description	Q'ty	Part No.	Description	Q'ty
A0230	Soft Damp Ass'y (C)	1	V2910	Spring Tube	3
B0680	Pinch Roller Ass'y	1	V3870	Sensor Arm Spacer	1
B0690	TU Idler Ass'y	1	V4140	Case Lock Arm Collar (B)	1
B0700	FF Idler Ass'y	1	V4170	Motor Pulley	1
B0710	Supply Reel Ass'y	1	V4190	FF Collar (A)	1
B0720	Take Up Reel Ass'y	1	V4250	Button Shaft (F)	1
C0330 (MP-390-323)	Counter	1	V4520	Rec Arm Collar	1
F0120	Flywheel (L)	1	X1990	R/P Head Washer	1
G0230 (WY-481AZ)	R/P Head	1	X5350	Lug Terminal (F)	1
G0320 (WY-241Z)	Erase Head	1	X5550	Rew Lever (D)	1
G1240	Cassette Button	6	X5560	FF Lever (D)	1
G1290	Shield Wire (Double-280)	1	X5590	Pause Cam (C)	1
G1300	Shield Wire (Double-220)	1	X5640	FF Idler Lever (A)	1
G1310	Shield Wire (Single-280)	1	X5700	Switch Arm (A)	1
G1320	Cord Hook	1	X5720	Rew Arm (D)	1
G1330 (MMi6C2HC)	Motor	1	X5730	FF Arm (D)	1
J0560	Flywheel Metal (I)	1	X5740	Stop Arm (A)	1
J0670	Cord Pulley Ass'y (A)	1	X5750	Button Side (LA)	1
J0690	Rew Idle (C)	1	X5760	Head Panel Pushing Plate (H)	2
K1890	Chassis Ass'y	1	X5780	Case Lock Arm (A)	1
K1920	Sensor Arm	1	X5790	Flywheel Support (N)	1
K1930	Lock Plate	1	X5800	Spring Plate (R) (Holding Pack)	1
K1950	Rew Idler Arm	1	X5810	Motor Bracket (M)	1
K1960	Eject Arm	1	X6100	Soft Adjust Plate	1
K1970	Pause Arm	1	X6150	Res Arm (D)	1
K1980	Play Arm	1			
K1990	TU Lever	1	01144	Pan Head Screw M2.6 x 3	3
K2000	Reel Base	1	01146	Pan Head Screw M2.6 x 5	2
K2010	Head Panel Ass'y	1	04145	Flat Head Screw M2.6 x 4	3
K2070	Soft Damp Plate	1	04166	Flat Head Screw M3 x 5	2
N0240	Eject Cord (E)	1	08087	Pan Head Screw M2 x 6 (Bind)	3
Q0240	R/P Head Spring (B)	1	17166	Pan Head Tapping Screw M3 x 5	6
Q0870	Rew Reel Spring (B)	1			
Q7140	Pinch Roller Spring (G)	1	19086	Pan Head Screw M2 x 5 W/Spring Washer	1
Q1750	TU Idler Spring	1			
Q1760	TU Lever Spring (A)	1	19145	Pan Head Screw M2.6 x 4 W/Spring Washer	4
Q1780	Rec Sensor Spring (F)	2			
Q1790	Rec Arm Spring (A)	1	19146	Pan Head Screw M2.6 x 5 W/Spring Washer	5
Q1800	Rew Arm Spring (C)	1			
Q1810	Play Arm Spring (A)	1	19151	Pan Head Screw M2.6 x 10 W/Spring Washer	1
Q1820	Stop Arm Spring (A)	1			
Q1830	Pause Arm Spring (C)	1	19166	Pan Head Screw M3 x 5 W/Spring Washer	1
Q1840	FF Arm Spring (B)	1			
Q1850	Pick Up Lever Spring (E)	1	20148	Pan Head Screw M2.6 x 7 W/Flat Washer	3
Q1870	Eject Lever Spring (N)	1			
Q1880	Rew Lever Spring (C)	1	21005	Pan Head Screw M2 x 4 W/Flat Washer	1
Q1890	Pause Cam Spring (E)	1			
Q1900	Switch Arm Spring (A)	1	27026	Spring Washer M2.6	3
Q1910	FF Lever Spring (C)	1	30126	Flat Washer M2.6	2
Q1920	Case Lock Arm Spring (A)	1	30130	Flat Washer M3	1
Q1930	Head Panel Spring (G)	1	32003	Poly. Slide Washer $\phi 2 \times 0.25t$	1
Q2130	Eject Cord Spring (D)	1	32004	Poly. Slide Washer $\phi 6.0 \times 1.0t$	2
Q2250	Eject Arm Spring (A)	1	32202	Poly. Slide Washer $\phi 2 \times 0.25$	4
S0360	Leaf Switch	1	32252	Poly. Slide Washer $\phi 2.5 \times 0.25$	1
U0340	Rubber Cushion	3	32602	Poly. Slide Washer $\phi 6.0 \times 0.25$	1
U0600	Polyacetal Screw	1	36015	E Ring $\phi 1.5$	3
U1100	Rec Sensor (I)	1	36025	E Ring $\phi 2.5$	5
U1120	Cassette Guide (G)	2	36040	E Ring $\phi 4.0$	2
U1190	Sensor	1	36050	E Ring $\phi 5.0$	1
U1230	Counter Belt	1	36215	E Ring $\phi 1.5$ (Black)	2
U1250	Cord Pulley (C)	1	42025	Steel Ball	2
U1330	Drive Belt	1			

- NOTES: 1. Part orders must contain Model Number, Part Number and Description.
2. Ordering quantity of screws and/or resistors must be multiple of 10 pcs.



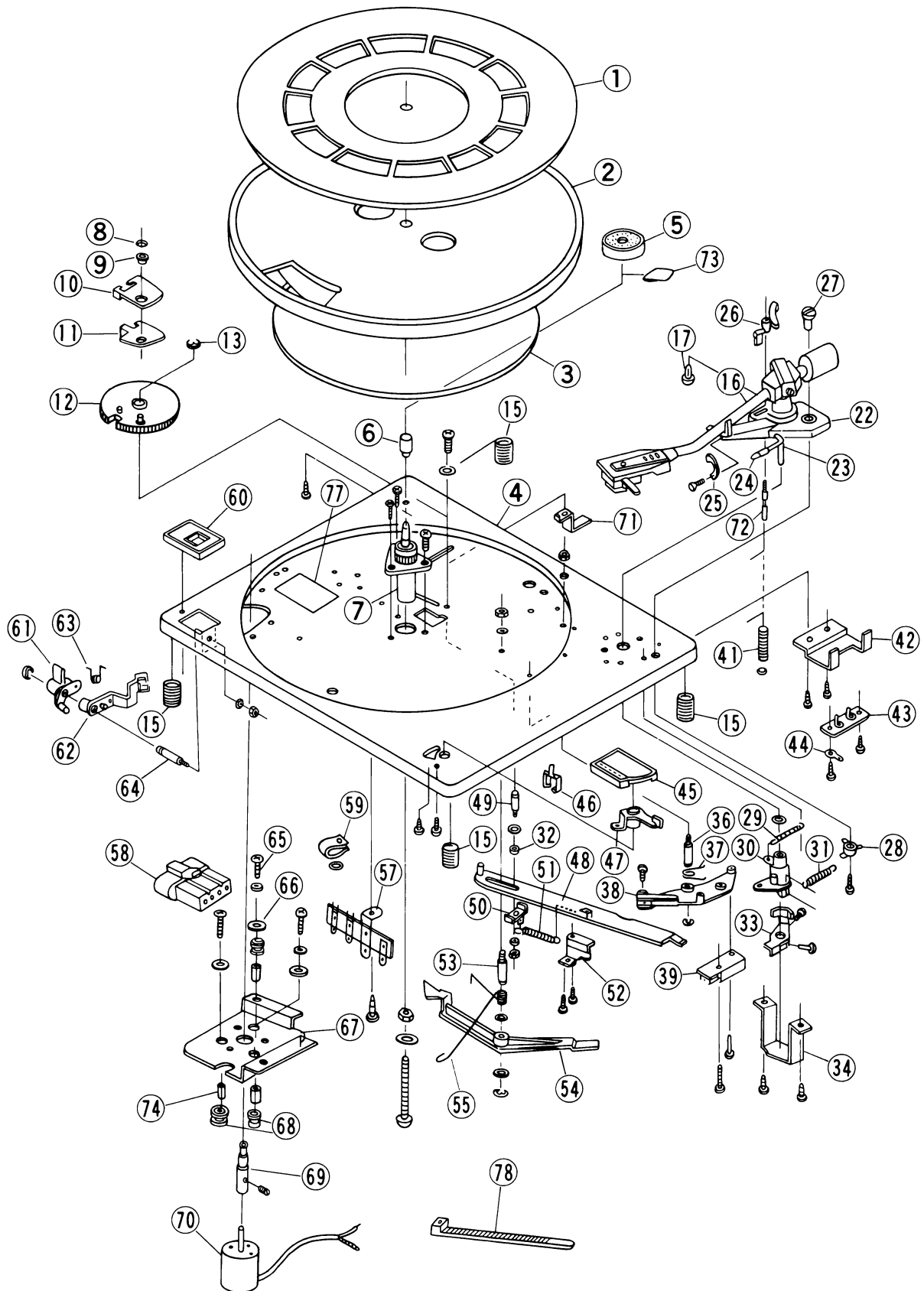
EXPLODED DIAGRAM

CASSETTE MECHANISM (CT-3709E)



EXPLODED DIAGRAM

TURNTABLE MECHANISM (BD-55NB-8)



PARTS LIST

TURNTABLE MECHANISM (BD-55NB-8)

Ref.No.	Part No.	Description	Q'ty	Ref.No.	Part No.	Description	Q'ty
1	CD20557	Rubber mat.	1	42	CA44243	Metal mount, 2P socket	1
2	CD20487	Turn table	1			Tap. Screw, Pan Hd., M3 x 5	2
3	CD43681-1	Belt	1	43	CF44279	2P socket	1
4	C20612S	Unit plate assembly	1			Tap. Screw, Pan Hd., M3 x 5	2
		Screw, Pan Hd., M4 x 35	1	44	CR44544	Lug. 3φ	1
		Nut, Hex Hd., 4	1	45	C45350S	Reject cover assembly	1
		Plane Washer, 4.2 x 18 x 1t	1			Tap. Screw, Pan Hd., M2.6 x 5	2
5	CD43100	Adaptor, 45 rpm dic (EP)	1	46	CD45052	Cord clamper	1
6	CD44244	Pin (3)	1	47	CD44261	Reject knob	1
		Tap. Screw, Pan Hd., M3 x 8	1	48	C44256S	Arm return assembly	1
7	C45393S	Shaft bracket assembly,	1	49	CB43791	Rotating shaft	1
		Screw, Pan Hd., S-tight, M3 x 8	3			Spring washer, 3	1
8		CSTW 3φ	1			Nut, Hex Hd., 3	1
9	CB44117	Gear stop stud	1	50	CA44263	Plate	1
10	CA43782	Eccentricity mounting	1	51	CE44269	Spring	1
11	CA43783-1	Gear stop arm	1	52	CA44266	Guide, Arm return	1
12	CD30343	D gear	1			Tap. Screw, Pan Hd., M3 x 5	2
		Plane washer, 3.2 x 8 x 0.5t	1	53	CB44262	Shaft. Reject lever	1
13		E-type washer, 4	1			Nut, Hex Hd., 3	1
15	CE44246	Spring	4			Plane washer, 4.5 (5) x 10 x 0.3t	1
16	C30673S	Pick-up arm assembly, with cartridge	1			Spring washer, 3	1
		E-type washer, 4	1	54	CD44267-1	E-type washer, 3	2
16-1	MC-15	Cartridge assembly	(1)	55	CE44268	Reject lever	1
16-2	MC-15S	Stylus	(1)	57	CF43314	Torsion spring	1
17	CD41936	Lift cap	1			Terminal plate, 4P-lug	1
22	CD30422	Base, Pick-up	1			Tap. Screw, Pan Hd., M3 x 5	1
		Tap. Screw, Pan Hd., M2.6 x 5	2	58	C45375S	Lock washer, 3	1
		Tap. Screw, Pan Hd., M3 x 8	1	59	CD43307	A.C. cord assembly	1
23	CB44281	Lift lever	1			Cord clamper, Nylon	1
		E-type washer, 2	1			Plane washer, 3 x 12 x 1t	1
24	CD43819	Knob, Lift lever	1	60	CD44828	Tap. Screw, Pan Hd., M3 x 8	1
25	CD43845	Lock lever	1			Cover assembly, Speed change	1
		Tap. Screw, Pan Hd., M2.6 x 6	1	61	CD44275	Tap. Screw, Pan Hd., M2.6 x 5	1
26	CD44700	Elevation base	1	62	CD44277	Speed change knob	1
27	CD44393	IFC knob	1	63	CE44278	Speed change lever	1
28	CD43824	Tap. Screw, Pan Hd., M2.6 x 5	1	64	CB44276	Torsion spring	1
		IFC arm	1			Speed change shaft	1
29	CE41817	Spring, Pick-up	1			Spring washer, 3	1
30	CD43811	Shaft bracket, Pick-up	1			Nut, Hex Hd., 3	1
		Screw, Pan Hd., M3 x 16	1	65		E-type washer, 3	1
31	CE44282	IFC spring	1			Screw, Pan Hd., M2.6 x 8	3
32	CB43795	Collar, Return plate	1			with Spring washer.	
33	C44253S	Plate pick-up table assembly	1	66		Plane washer, 2.6 x 10 x 1.2t	3
		Screw, Pan Hd., M3 x 6	2	67	CA45265	Plate assembly, Motor	1
34	CA44242-1	Bracket, Plate assembly	1			Tap. Screw, Pan Hd., M3 x 5	2
		Tap. Screw, Pn Hd., M3 x 5	2	68	CD43786	Rubber cushion	3
36	CB42476	Reject lever axis	1	69	CB45317-1	Pulley,	1
		Spring washer, 3	1	70	CF30663	Motor	1
		Nut, Hex Hd., 3	1	71	CA43263	Metal bracket	1
		E-type washer, 3	1			Screw, Pan Hd., M4 x 8	1
37	CE44271	Torsion spring	1			Plane washer, 4.2 x 10 x 1t	1
38	CD44264	Switch arm	1	72	CB44265	Elevation axis	1
		Screw, Pan Hd., S-tight, M3 x 12	1			E-type washer, 2	1
39	CF30218	Micro switch	1	73	CH43179	Polyethylene sheet	1
		Self Tap. Screw, B-tight, M3x16	1	74	CB45423	Spacer, Motor	3
41	CE44270	Spring	1	77	CH45262	Label, Note	1
				78	CD45269	Cable tie	1

PARTS LIST

Part No.	Description	Symbol No.	Q'ty a set
INTEGRATED CIRCUITS & TRANSISTORS			
AN7218	IC	IC101	1
LA3350SS	IC	IC151	1
μA7300PC	IC	IC701, 702	2
2SC1047 (C)	Transistor	Q2	1
2SC1359 (C)	Transistor	Q3	1
2SC1327 (S, T) or 2SC693 (G)	Transistor	Q151, 401-408 501, 502	11
2SB691 (P, Q)	Transistor	Q311, 312	2
2SD727 (P, Q)	Transistor	Q309, 310	2
2SC1509 (Q, R)	Transistor	Q303-306	4
2SA777 (Q, R)	Transistor	Q307, 308	2
2SA722 (S, T)	Transistor	Q301, 302	2
2SD612K (D, E) or 2SC2209 (R, S)	Transistor	Q201	1
2SA721 (S, T)	Transistor	Q409	1
2SC536AUD (F) or 2SC1684 (Q, R)	Transistor	Q503,504,703-6	6
2SC693 (G) or 2SC644 or 2SC1571L-NP (G)	Transistor	Q451, 452	2
2SC1327 (S, T)	Transistor	Q701, 702	2
2SD592NC (R, S)	Transistor	Q751	1
2SC1685 (Q, R, S) or 2SC2274 (E, F)	Transistor	Q752	1
2SK83 (S1)	Transistor (FET)	Q1	1
DIODES			
1S188FM	Germanium Diode	D101, 102, 701-704	6
1S188AM	Germanium Diode	D103, 104	2
GP-20B	Silicon Rectifier	D201-204	4
GP-08B	Silicon Rectifier	D205, 206	2
1S2236	Voltage Variable Capacitor Diode	D1	1
MA-26W	Variable Resistor Diode	D301-304	4
WZ-210	Zener Diode	ZD207	1
WZ-182	Zener Diode	ZD701	1
GL-9PR2	L.E.D.	LD1, 701, 702	3
COILS & TRANSFORMERS			
126018	FM ANT Coil	L1	1
126014	FM RF Coil	L2	1
100012	FM Trap Coil	L3	1
190003	FM OSC Coil	L4	1
135003	MW OSC Coil	L5	1
132005	LW OSC Coil	L6	1
N013	Bias OSC Coil	L752	1
N021	FM IFT	T1	1
141013	FM Det. Coil	T101	1
141014	FM Det. Coil	T102	1
FSN-1072	AM IFT	T103	1
140030	AM IFT	T104	1
39mH	Inductor	L151, 152	2
4.7mH	Inductor	L701, 702	2
1.5mH	Inductor	L751	1
39mH	Variable Inductor	L703, 704	2
124016	Ferrite Loopstic	L901-903	1
NPT-0525S	Power Transformer		1
2.2mH	Inductor	L705, 706	2
CONTROLS			
EWK-KJA337B54	Potentiometer	VR406 (VOL.)	1
EWK-ENA337751	Potentiometer	VR405 (BAL.)	1
EWK-ENA337A54	Potentiometer	VR403, 404 (TONE)	2
EVH-2AA337A24	Potentiometer	VE407, 408 (REC. LEVEL)	2

Part No.	Description	Symbol No.	Q'ty a set
1K ohm (B)	Carbon Trimmer	SVR151, 701- 704, 773, 774	7
5K ohm (B)	Carbon Trimmer	SVR152	1
20K ohm (B)	Carbon Trimmer	SVR705, 706	2
200K ohm (B)	Carbon Trimmer	SVR707, 708	2
ECV-5MD34x53G	Tuning Capacitor	VC1-5, TC1, 2	1
AT2-52-7W	2P Trimmer Capacitor	TC4-5, 6-7	2
ECV-1ZW10x32E	1P Trimmer Capacitor	TC3	1
FILTERS			
SFE-10.7MM-Z	Ceramic Filter	F101	1
FB2060B	Filter Block	F701, 702	2
SWITCHES			
ESB-7097	Power ON/OFF Switch	S1	1
SW-3647018	Rotary Slide Switch	S3 (FUN.)	1
ESB-76276	5-Key Push Switch	S4-9	1
ESD-811	Rec/Play Slide Switch	S10	1
ESB-73502	Push Switch	DS1-3 (DOLBY)	1
SW302-1-2	3P Slide Switch	(Interference)	1
ESA-2633	Remote Switch	TS1-5	1
ESA-222	Remote Switch Lever	(TAPE SEL.)	1
ESA-30223B	Remote Wire		1
FUSES			
5φ x 20 2A	Fuse	Fu802	1
5φ x 20 1A	Fuse	Fu803, 804	2
5φ x 20 500mA	Fuse	Fu801	1
5φ x 20 1.25A	Fuse	Fu301, 302	2
LAMPS			
BF310-50020A	Lamp	PL901, 902	2
BQ141-26404A	Lamp	PL903-905	3
METERS			
EMT-2210	VU Meter		2
EMT-225	Tuning Meter		1
PLUGS, SOCKETS & CONNECTORS			
FUH-001	Fuse Holder		1
HF-033	Fuse Holder		1
S-N 5053	Fuse Block		4
LJ252-1-1	Headphone Jack		1
XG-8010	Microphone Jack		2
B2-702D-01	FM ANT Socket		1
D2-714N-00	DIN Socket		1
B2-701D-01	AM ANT Socket		1
Ass'y MC03-007	3P Micro Connector	for Rec. Input	1
Ass'y MC03-008	3P Micro Connector	for VU Meter	1
Ass'y MC03-020	3P Micro Connector	for Motor	1
Ass'y MC03-010	3P Micro Connector	for Tun. Meter	1
Ass'y MC04-011	4P Micro Connector		1
Ass'y MC03-019	3P Micro Connector	for Interference	1
171825-3	3P Micro Plug		5
171825-4	4P Micro Plug		1
4SM-88 x 8A	Phono Power Plug		1
BP-001	Phono Input Plug		2
D5-710N-01	5P DIN Socket		1
323 HDS	AC Block Terminal		1

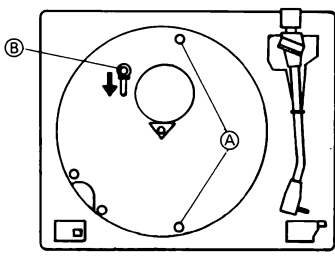
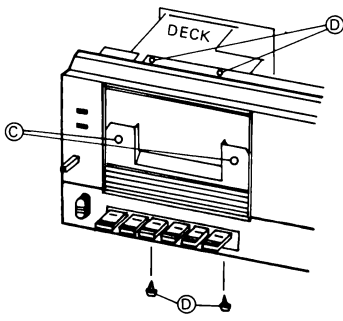
NOTE: 1. Part orders must contain Model Number, Part Number and Description.
2. Ordering quantity of screws and/or resistors must be multiple of 10 pcs.

Part No.	Description	Symbol No.	Q'ty a set
CABINET			
N20580A-BK No. 7104	Cabinet Cabinet Foot		1 4
N41165	Shield Paper		1
N20358	Cassette Compartment Tray		1
FRONT PANEL			
N10121	Front Panel		1
N30206-T	Tinted Window		1
N41098A	Right Side Plate		1
N41099A	Left Side Plate		1
N30209-5-BK	Push Knob Guide	for 5-key Switch	1
N30209-1-BK	Push Knob Guide	for Single Switch	2
N41109	Counter Window		1
N41144	Rubber Bush	for Rec. Ind., Dolby	2
N41153A	Decoration Rivet		2
N30252-1	Lever Knob Guide	for Lever Switch	1
KNOBS & BUTTONS			
N30204-BK	Cassette Key		6
N41538-S	Cassette Key Cap		5
N41538-SR	Cassette Key Cap	with Read Mark	1
N41786	Tuning Knob 34		1
N41787	Knob 34	for Volume Cont.	1
N41788	Knob 19	for Audio Cont.	6
N41281-S	Pushbutton		7
N30254A	Lever Knob		1
CASSETTE HOLDER			
N20315-BK	Cassette Holder		1
N41214-BK	Identification Plate	on the Holder	1
N41113	Holder Spring		2
N41095	Metal Bracket	in the Holder	2
N41151	Decoration Screw		2
N41112B	Eject Spring (R)		1
N41168A	Eject Spring (L)		1
N30215-BK	Holder Rear Base		1
N40271	Cassette Mirror		1
N411107	Cassette Window		1
DUST COVER & HINGES			
N20314	Dust Cover		1
N41157	Rubber Cushion		2
N41789	Name Plate		1
30007	Hinge		2
STRINGING PARTS			
SUPER 5 No. 1035A	Dial String	1.5 meter	1
No. 7017	Dial Drum		1
No. 5508	Pulley		3
No. 2701	Pulley Shaft		3
N30299	Dial Spring		1
N41175	Tuning Shaft Ass'y	with Flywheel	1
N4110-T	Slide Paper		1
	Pointer		1
CHASSIS & METAL BRACKETS			
N20311B	Front Chassis		1
N20312D	Main Chassis		1
N30201A	Right Chassis		1

Part No.	Description	Symbol No.	Q'ty a set
N30202	Left Chassis		1
N41125A	AC Bracket	for Fuseholder	1
N40834A	Side Bracket		1
N41090	Headphone Bracket		1
N41091	Front Top Bracket		2
N41092	Pulley Bracket		1
N30203C	Cass. Bottom Bracket		2
N41093A	Cass. Top Bracket		1
N41094	Rec. Slide Lever		1
N41096	Heat Sink Bracket R		1
N41097	Heat Sink Bracket L		1
N41196	Shield Plate		1
N40413	Lock Washer		6
N41154	Cass. Rec. Lever		1
N30258	Rear Chassis		1
N41369	Stud 35		2
DIAL SCALE			
N30208-1	Dial Scale		1
N41111-BXI	Dial Base Plate		1
N41104	Dial Scale Holder (R)		1
N41105	Dial Scale Holder (L)		1
N41144	Rubber Bush	for St. Ind.	1
MISCELLANEOUS			
N41106	Mic Jack Holder		1
N40679A	Loopstick Holder		1
N41167	Rubber Cushion	for Meters	1
N20551	Rear Cover		1
N41170	Felt	for Reset Button	1
N41268	Felt	for Lever Switch	1
N40944	Fiber		1
N41303	Black Paper		1
N41014	Serial No. Label		3
ACC-005	Power Supply Cord		1
SR-3P-4	Cord Bush		1
N41164A	Heat Sink		1
CT-3709E	Cassette Mechanism	See Page 12	1
BD-55NB-8	Turntable Mechanism	See Page 14	1
ACCESSORIES			
DM-1552NY1	Microphone		2
MS-53	Mic. Stand		2
FM5002A	FM Dipole Antenna		1
OM-163	Instruction Book		1
PACKING MATERIALS			
N41194A	Poly. Bag	(for Unit)	1
N40487	Poly. Bag	(for Acce.)	1
N40769A	Sheet	for Cass. Holder	1
4PC-46	Mic. Case		2
N41747	Inner Carton		1
N41201	Top Pad		1
N41202	Turntable Pad		1
N20371	Right Side Pad		1
N20372A	Left Side Pad		1

NOTE: 1. Part orders must contain Model Number, Part Number and Description.
2. Ordering quantity of screws and/or resistors must be multiple of 10 pcs.

DISASSEMBLY INSTRUCTION

STEP	PROCEDURE	REMARKS
TURNTABLE UNIT REMOVAL		
<ol style="list-style-type: none"> 1. Remove the turntable. 2. Remove the 2 transit screws (A). 3. Loose the screw (B) and then move it to the arrow mark indicated. 4. Remove the turntable unit. 5. Unplug the connectors. 		
CHASSIS REMOVAL		
<ol style="list-style-type: none"> 6. Remove 6 bottom screws and lock washers. 7. Pull the front panel forward to remove the chassis from the cabinet. 		
CASSETTE DECK UNIT REMOVAL		
<ol style="list-style-type: none"> 8. Remove the 2 screws on the cassette window (C). (The cassette window will be removed.) 9. Remove the 4 screws (D) which is securing the cassette deck unit to the front panel. 10. Remove the L.E.D. for the recording indicator and Dolby indicator from the rubber bush on the front panel. 11. Unplug the connectors. 12. Remove the Lever Knob. 13. Remove the cassette deck unit from the front panel. 		
FRONT PANEL REMOVAL		
<ol style="list-style-type: none"> 14. Remove 7 control knobs and 1 tuning knob. 15. Unplug the connectors for meters. 16. Remove 2 top screws and 3 bottom screws on the front panel. 17. Remove the front panel. 		