

Simple Search	Full Search	Main Menu
Patentee Codes	Field Description	Help

[\[Home\]](#)[\[Search\]](#) [\[Prev.\]](#) [\[Titles\]](#) [\[Next.\]](#) [\[Prev Doc\]](#) [\[Next Doc\]](#) [\[FAQ\]](#)

Title

Bass-reflex loudspeaker cabinet has sub-duct placed at mid-position of bass reflex duct to absorb unwanted resonance sounds

Patentee(s)

PIONEER ELECTRONIC CORP; (PIOE;)

Inventor(s)

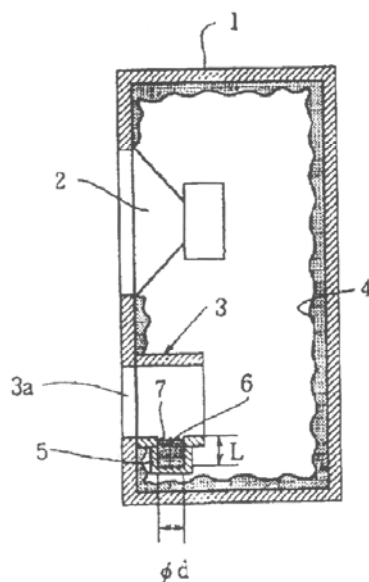
HAMADA H; NAKA T;

Abstract

The speaker system having a bass-reflex duct provided in a cabinet, comprises a sub-duct provided on a central portion of the bass-reflex duct, and communicated with the bass-reflex duct. A sound absorbing material provided in the sub-duct absorbs unnecessary resonance generated in the bass-reflex duct. A length of the sub-duct is determined by $L=(c/4f_r)-0.4d$ where L is the length of the sub-duct, c is sound velocity, f_r is an unnecessary resonance frequency of the bass-reflex duct, and d is an inner diameter of the sub-duct.

Use/Advantage

System has flat frequency characteristic, increasing reproduction efficiency and quality of reproduced sound.



Family	Patent No.	Type	Date	Derwent Week
	JP-05049081	A	93-02-26	9313
	US-5333204	A	94-07-26	9429
Priority	Patent No.		Date	
	JP-0224597		91-08-09	
Application	Applic. No.		Date	
	JP-0224597		91-08-09	