

Simple Search	Full Search	Main Menu
Patentee Codes	Field Description	Help

[\[Home\]](#) [\[Search\]](#) [\[Prev.\]](#) [\[Titles\]](#) [\[Next.\]](#) [\[Prev Doc\]](#) [\[Next Doc\]](#) [\[FAQ\]](#)

Title

Bass reflex speaker system with no leakage of mid-frequency signals has internal duct from bass reflex port with deflectable membrane over duct sidewall opening

Patentee(s)

SOCON AB; (SOCO;)

Inventor(s)

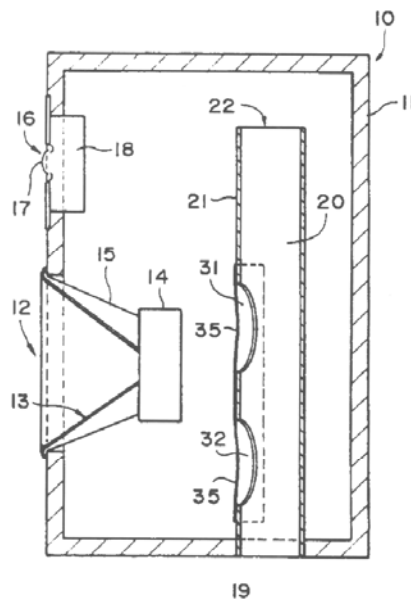
STAHL K;

Abstract

The system comprises a driver mounted in a cabinet (11) with a **bass reflex port** (19) in a wall, an open-ended duct (20) with one end connected to the port and with an additional opening (32) between its ends, and a deflectable membrane (35) covering the additional opening. The film is pref. of polyurethane elastomer with means for damping resonances in it. Alternatively, the membrane is rigid and has a surround to support it and allow its movement. The duct is a straight tube and the additional opening is spaced from the port by 1/4 of the wavelength of a standing wave in the duct. The duct may have a number of additional openings predetermined by duct length and an upper crossover frequency for the driver.

Use/Advantage

Does not suffer undesirable leakage of mid-frequency signals through the ducted port or require complicated bulky or expensive duct or cabinet design.

**Family****Patent No.****Type****Date****Derwent Week**

US-5150417

A

92-09-22

9241

TW-227083

A

94-07-21

9432

Priority**Patent No.****Date**